



Baywood Square, Chigwell, IG7

BUTLER & STAG





**This impressively refurbished and smartly upgraded home presents a modern three bedroom layout in the desirable Baywood Square. It offers a perfect blend of comfort and practicality – ideal for families or professionals.**



- Three Generous Bedrooms
- Newly Refurbished To An Impeccable Standard
- Close To Local Amenities
- Quiet, Residential Area
- Bright & Spacious
- Driveway For Two Cars
- Low- Maintenance South- Facing Garden

The ground floor features a bright hallway leading to a well-proportioned lounge, perfect for relaxing or entertaining. At the rear, the spacious kitchen offers ample worktop space, dining potential, and direct access to the garden for al fresco dining. A convenient storage area adds practicality to this level.

Upstairs, you'll find three generous bedrooms, including a bright principal bedroom, a second double bedroom, and a versatile third bedroom. This floor also features a full family bathroom and a separate WC for added convenience.

Additional highlights include ample built-in storage, a light-filled landing area, and a private rear garden. Conveniently located around 1.2 miles from Grange Hill Station, offering quick access to the Central Line for fast, direct connections into central London and beyond. Well-connected to local amenities, this home is a fantastic choice for comfortable, modern living.

Council Tax Band C





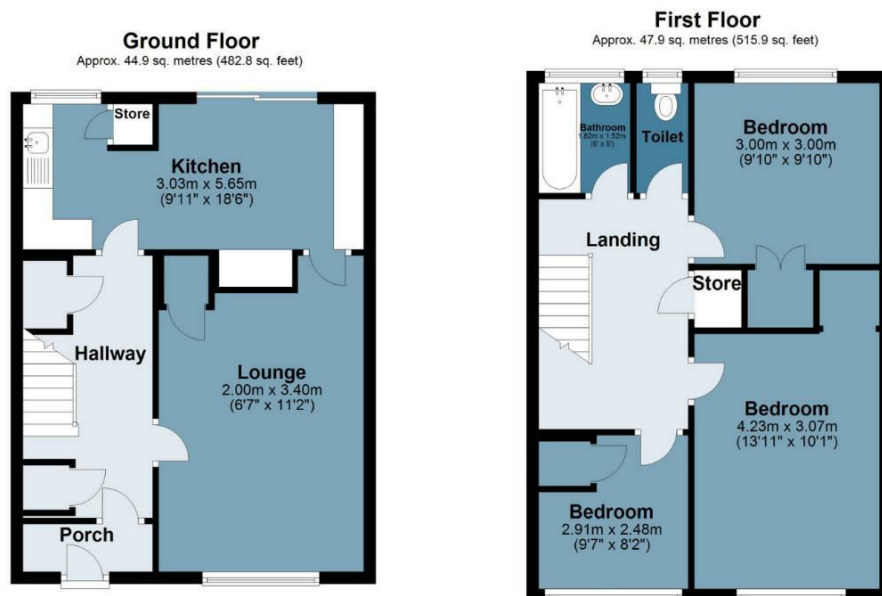




## Baywood Square

Approx. Gross Internal Area 92.8 sq. metres (998.7 sq. feet)

BUTLER & STAG



Measurements are approximate and for illustration purposes only. While we do not doubt the accuracy and completeness, we advise you conduct a careful independent assessment of the property to determine monetary value  
© @modephoto.uk www.modephoto.co.uk

IMPORTANT NOTICE - These particulars have been prepared in good faith and they are not intended to constitute part of an offer or contract. We have not performed a structural survey on this property and the services, appliances and specific fittings have not been tested. All photographs, measurements, floor plans and distances referred to are given as a guide and should not be relied upon.

BUTLER & STAG

☎ 01992 667666

🏠 4 Forest Drive, Theydon Bois, Essex, CM16 7EY

✉ theydon@butlerandstag.com

[www.butlerandstag.uk](http://www.butlerandstag.uk)